



infrastructure



know-how



brand



measurement



social value

Ten Years Back and Ten
Years Ahead:

Green Chemistry & the GC3

Steelcase - bringing lasting value



current landscape - 3 big challenges

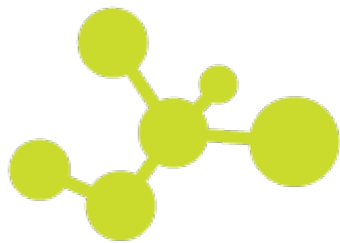


Toxicity

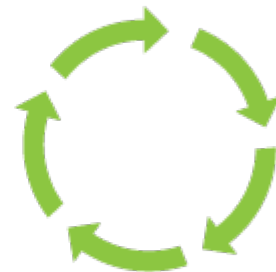
Waste

Consumption

designing for environment 3 platforms



**Materials
Chemistry**

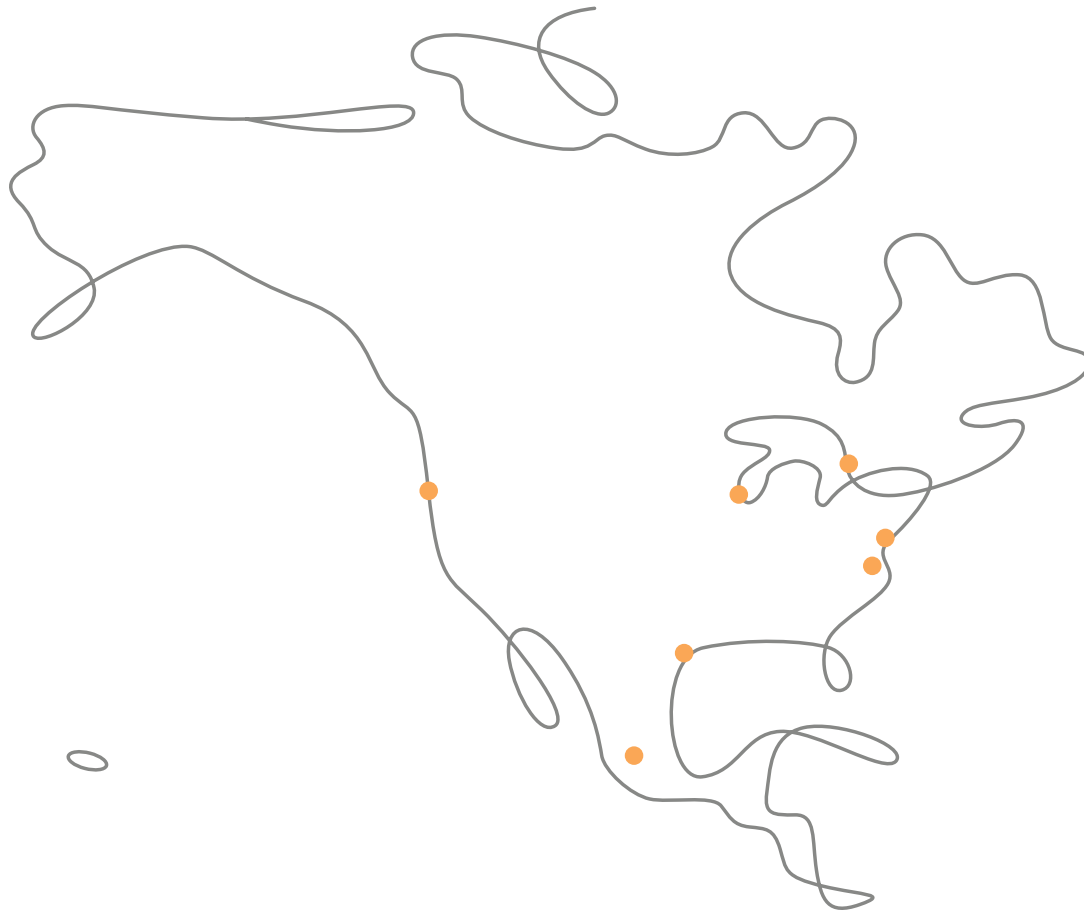


**Life Cycle
Assessment**



**Recycle
& Reuse**

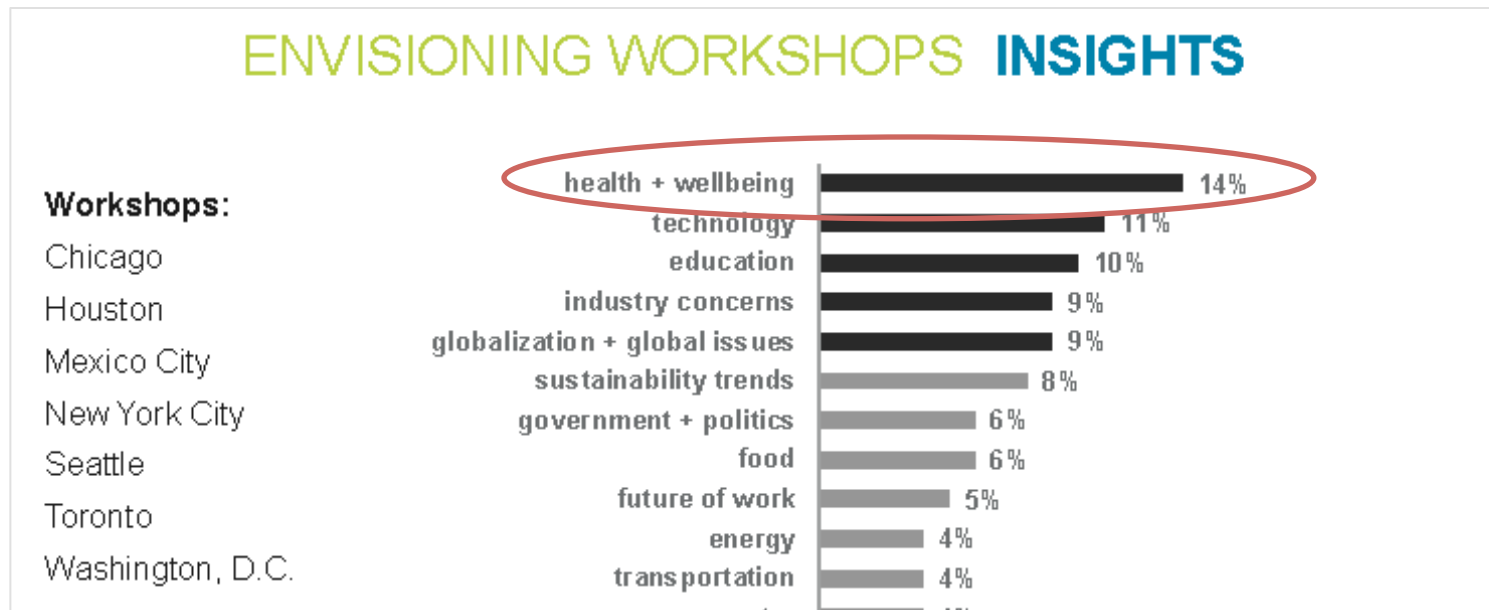
envisioning workshops – the future landscape of sustainability



envisioning workshops – reoccurring themes

Technology • Globalization • Education • Well being • Industrial Reinvention

- Are we willing to make change at individual level?
- Will we sacrifice comfort, convenience, time & money?
- Willing to balance ourselves within natural environment?
- Are we equipped for this planetary change?
- How far can we stretch the limits of human potential?



envisioning workshops – insights

The environmental landscape – the planet will look different

Tension between global and local – government, family & agriculture redefined

Education systems must change – global design thinking, creative problem solving, collaboration, synthesizing big data

Economic reinvention – natural cycles, water, time & happiness as the new currency

current & future value – partnerships & collaboration



Steelcase

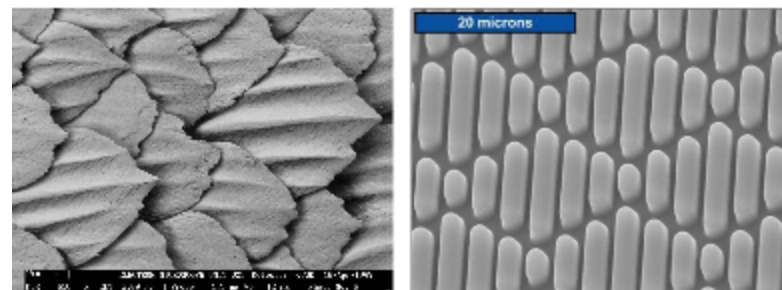
Nike & Seagate



K-12 education – Beyond Benign partnership



Steelcase®



<http://ocean.si.edu/ocean-photos/biomimicry-shark-denticles>
<http://www.asknature.org/product/3c21a56f0ba2ae549894a2bf79372bda>



Steelcase, Students & Sustainability

Posted by Alicia Crawford in Sustainability News on Mar 11, 2015 10:55:00 AM

Just this past August, the Materials Chemistry team linked up with Beyond Benign, a "Advanced Green Chemistry" workshop. The teachers sat in a room at the SULC and fir

chemistry team connection – furthering education



WHAT'S HAPPENING AT CHERRY CREEK Steelcase Scientists came to CCE!



Students in Mr. Audin's fourth grade became partners with Steelcase scientists (in partnership with Ecovative Company of New York) this week. The Green Chemistry Innovation team, led by CCE parent Mrs. Tammy Ayers, visited the class to talk about their work. Students had the opportunity to use plant wastes, mixed with mycelium cells from mushrooms, to create biodegradable styrofoam. They used the mixture to make little ducks, and will observe the length of time needed for the project to decompose. We believe we have many future scientists here!

Kindergarten at

If you joining packets Kindergarten enrollment Please design a child's round made packet. looking new kid



Maple Syrup Fest & Pancake Breakfast



SATURDAY
MARCH 21st
9AM-1PM

TIME FOR KIDS

We have kicked off our Time for Kids program bringing home a parent letter and Time for Kids packet. This program allows our school to receive free "TIME FOR KIDS". "TIME FOR KIDS" is a weekly current event stories and geographical information



innovation & inspiration – WBI



“I would encourage EVERYONE to watch the entire hour of John's presentation! He blew me away - this unassuming guy showed up on stage and had me completely mesmerized. He's quite a story-teller. His overall message is so inspiring - especially that he was so encouraging of invention.



I'm still marveling at his examples of how science and molecules relate to music AND football strategy! WOW! I'm still feeling empowered a full 24 hours later, and I'm not really sure why!!! Oh, yes I am. It was good stuff. Share it with your teenagers, college students. Really. And be proud of the company you work for. It was nice to hear such a thought-leader and a "do-leader" loving what The "Case is doing, too. He's got me smiling!”

benchmarking – Nike & Seagate

